




3D Industrial Camera VMD

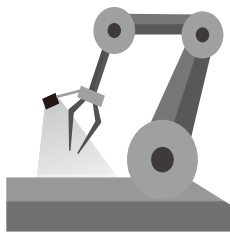
High Accuracy RGB-D Camera



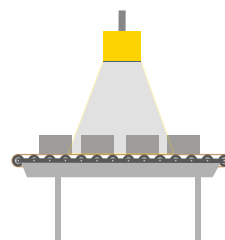
Highlights

-  High Accuracy Striped Structured Light RGB-D Camera
-  Sub-millimeter accuracy at distance up to 2.15 m
-  Guidance for robot

Applications



Robot Guidance

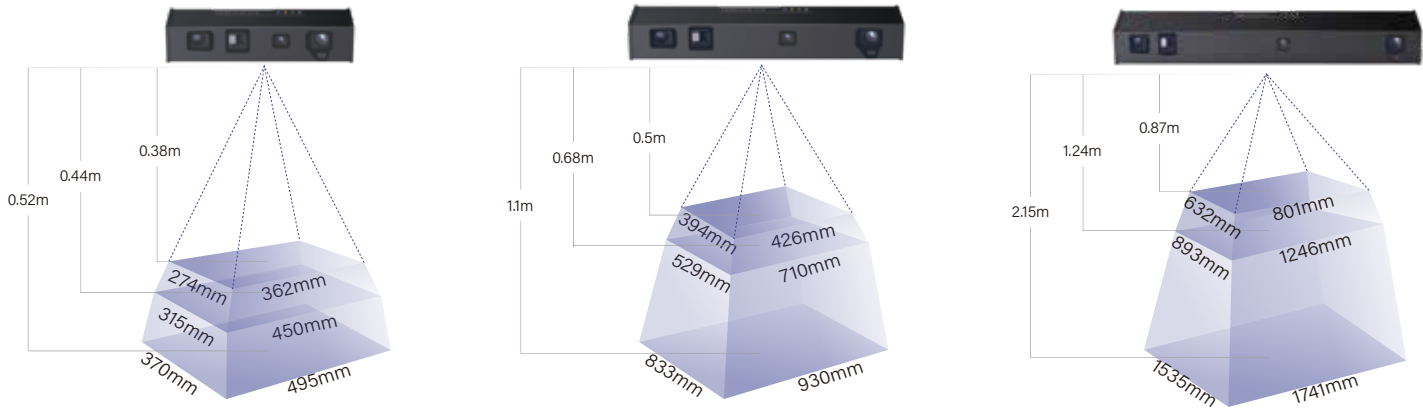


Inspection

Specification

Model	VMD01	VMD02	VMD03
Working Distance	0.38m-0.52m	0.5m-1.1m	0.87m-2.15m
FOV (H/V)	54°/42° (max)	54°/42° (max)	53°/42° (max)
Capture Time	1828~2983 ms	1996~3198 ms	2688~3128 ms
Pixel Temporal Noise (Standard Mode)	0.018mm@440mm	0.06mm@650m	0.09mm@1250mm
Point-to-Point Distance	0.22 mm @ 440 mm	0.32 mm @ 650 mm	0.6 mm @ 1240 mm
Depth Resolution	2048 * 1536		
RGB Resolution	2560 * 1920		
IP Rating	IP65		
Power Consumption	≤24W		
Size	309mm * 104mm * 64mm	449mm * 104mm * 64mm	679mm * 104mm * 64mm
Weight	1909g	2356g	3084g
Power Supply	DC 24V - 48V		
Data Connector	M12 X-Code, 8-pin, femaleconnector		
Power & Trigger Connector	M12 A-Code, 8-pin, maleconnector		

FOV



Leading Provider of 3D Machine Vision

www.pcp3d.com

info@pcp3d.com



PERCIPIO.XYZ @Youtube