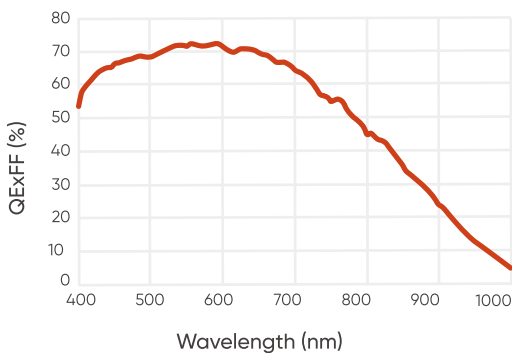


Dhyana 401D

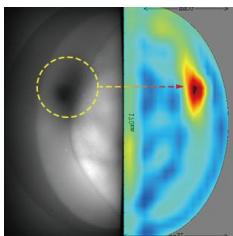
The Dhyana 401D is the sCMOS answer for system integrators who seek sCMOS performance but want to preserve their instrument cogs / cost. Built in a small package using a front illuminated 6.5 μm pixel sensor, the camera delivers what most systems need cost-effective of other contemporaries.



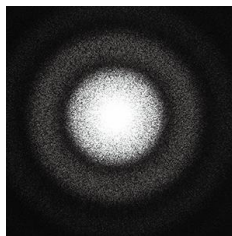
Quantum Efficiency



Application Cases

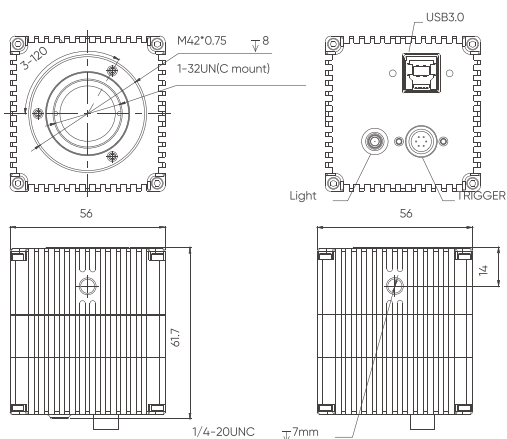


Tumor-DOT Detection



Blood-Diffractive Phase Imaging

Dimensions (Unit: mm)



Specifications

Model	Dhyana 401D
Sensor Type	FSI sCMOS
Sensor Model	GSENSE2020
Peak QE	72 % @ 595 nm
Color/Mono	Mono
Array Diagonal	18.8 mm
Effective Area	13.3 mm x 13.3 mm
Resolution	2048 (H) x 2048 (V)
Pixel Size	6.5 μm x 6.5 μm
Full-Well Capacity	Typ. : 43 ke-
Frame Rate	40 fps @ 16 bit, 45 fps @ 8 bit
Readout Noise	Typ. : 2.1 e- (Median)
Shutter Type	Rolling
Exposure Time	10 μs ~ 10 s
Binning	2 x 2, 4 x 4
ROI	Support
Trigger Mode	Hardware, Software
Output Trigger Signals	Exposure Start, Readout End Trigger Ready
Trigger Interface	Hirose
Data Interface	USB 3.0
Data Bit Depth	8 bit, 12bit, 16 bit
Optical Interface	C-mount
Power Supply	USB 3.0
Power Consumption	< 4 W
Dimensions	56 mm x 56 mm x 61.7 mm
Weight	305 g
Software	Mosaic, LabVIEW, MATLAB Micro-Manager 2.0, SamplePro
SDK	C, C++, C#, Python
Operating System	Windows, Linux
Operating Environment	Working: Temp. 0~40°C , HUM 10~85% Storage: Temp. 0~60°C , HUM 0~90%