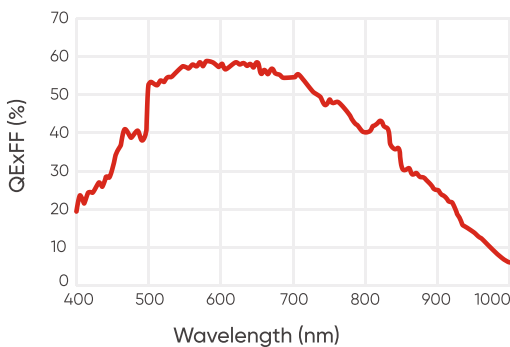


# Dhyana 401A-G

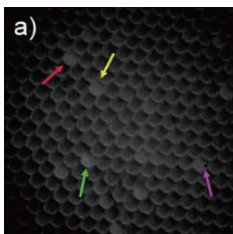
The Dhyana 401A-G is the sCMOS answer for system integrators who seek sCMOS performance but want to preserve their instrument cogs/cost. Built in a small package using a front illuminated 11  $\mu\text{m}$  pixel sensor, the camera delivers what most systems need. It also remains the most cost-effective choice when compared to its contemporaries.



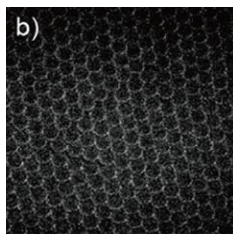
## Quantum Efficiency



## Application Cases

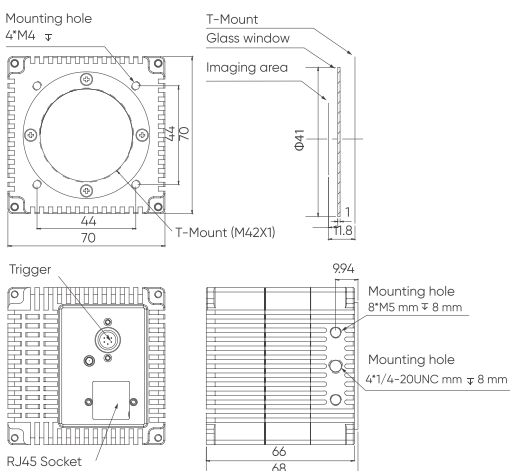


401A (11  $\mu\text{m}$  pixel size)



CCD (5  $\mu\text{m}$  pixel size)

## Dimensions (Unit: mm)



## Specifications

Model	Dhyana 401A-G
Sensor Type	FSI sCMOS
Sensor Model	Gpixel GSENSE400
Peak QE	58% @ 600 nm
Color/Mono	Mono
Array Diagonal	32 mm
Effective Area	22.5 mm x 22.5 mm
Resolution	2048 (H) x 2048 (V)
Pixel Size	11 $\mu\text{m}$ x 11 $\mu\text{m}$
Full-Well Capacity	Typ. : 91 ke-
Dynamic Range	Typ. : 95 dB
Frame Rate	20 fps
Readout Noise	Typ.: 1.5 e- (Median)
Shutter Type	Rolling
Exposure Time	21 $\mu\text{s}$ ~ 1 s
Binning	2 x 2
ROI	Support
Trigger Mode	Hardware, Software
Output Trigger Signals	Exposure Start, Readout End
Trigger Interface	Hirose
Data Interface	GigE
Data Bit Depth	12 bit, 16 bit
Optical Interface	M42
Power Supply	12 V / 2 A
Power Consumption	6 W
Dimensions	70 mm x 70 mm x 68 mm
Weight	540 g
Software	SamplePro
SDK	C, C++, C#
Operating System	Windows, Linux
Operating Environment	Working: Temp. 0~40 $^{\circ}\text{C}$ , HUM 10~85% Storage: Temp. 0~60 $^{\circ}\text{C}$ , HUM 0~90%