

DOWA UV LEDs Product Reference

DOWA

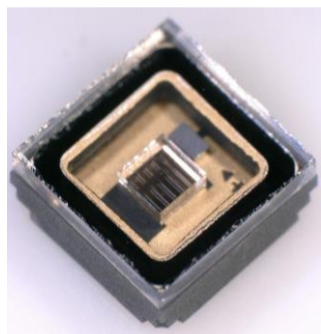
■SMD Solutions

(Ta = 25 °C)

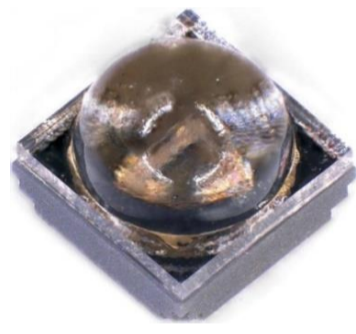
Series	Flat Top type			HEMI Lens G01 type			HEMI Lens G02 type				
Type	FG-02-U05	FL-02-U05	FL-03-U05	FG-02-G01	FL-02-G01	FL-03-G01	FG-02-G02	FL-02-G02	FL-03-G02		
Size	3535	3535	3535	3535	3535	3535	3535	3535	3535		
Cover Window	Flat	Flat	Flat	HEMI	HEMI	HEMI	HEMI	HEMI	HEMI		
Protection Device	○	○	○	○	○	○	○	○	○		
Viewing Angle [deg.]	120	120	120	35	35	35	65	65	65-70		
Typical Radiant Flux (Po) and Forward Voltage (VF)											
	I _F [mA]	100	350	350	100	350	350	100	350	350	
λp [nm]	308 ± 5	Po [mW]	19	50	-	16	43	-	18	47	-
		V _F [V]	5.2	5.5	-	5.2	5.5	-	5.2	5.5	-
	325 ± 5	Po [mW]	14	-	60	13	-	50	14	-	55
		V _F [V]	5.1	-	4.9	5.1	-	4.9	5.1	-	4.9
	340 ± 5	Po [mW]	21	-	90	21	-	80	21	-	85
		V _F [V]	4.1	-	4.6	4.1	-	4.6	4.1	-	4.6

ヘアチップの供給も可能です。/ Bare dies are available. (20mil, 30mil and 40mil)

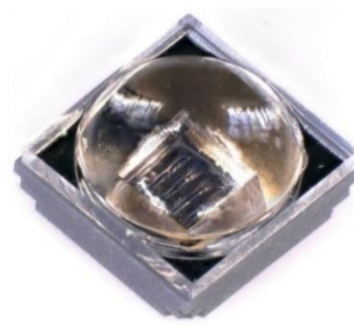
ピン分けを含むカスタム仕様の対応も可能です。/ Customized specification and binning are available on a customer's request.



Flat Top type



HEMI Lens G01 type



HEMI Lens G02 type

■TO-Stem Solutions

(Ta = 25 °C)

Series	φ9			φ5					
Type	T-10031	L-1F131	L-1H331	L-1F111	L-1H321	L-1H411	L-1H211		
Package Type *	TO-39	TO-39	TO-39	TO-18	TO-46S	TO-18	TO-18		
Cover Window	—	Flat	HEMI	Flat	HEMI	HEMI	HEMI		
Protection Device	×	○	○	○	○	○	○		
Viewing Angle [deg.]	144	114	6-12	113	6-12	40	24		
Typical Radiant Flux (Po) and Forward Voltage (VF)									
	I _F [mA]	20	20	20	20	20	20		
λp [nm]	308 ± 5	Po [mW]	2.0	1.5	0.8	1.2	0.9	1.3	1.2
		V _F [V]	5.0	5.0	5.0	5.0	5.0	5.0	5.0
	325 ± 5	Po [mW]	2.0	1.7	0.9	1.2	1.0	1.4	1.5
		V _F [V]	4.5	4.5	4.5	4.5	4.5	4.5	4.5
	340 ± 5	Po [mW]	2.0	1.7	1.0	1.3	0.9	1.3	1.3
		V _F [V]	4.0	4.0	4.0	4.0	4.0	4.0	4.0

*TO-18:JEDEC TO-18, TO-46S:JEDEC TO-46

ピン分けを含むカスタム仕様の対応も可能です。/ Customized specification and binning are available on a customer's request.



T-10031



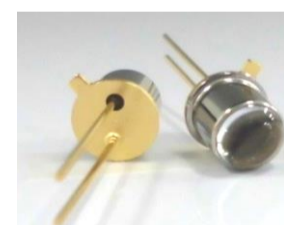
L-1F131



L-1H331



L-1F111



L-1H321



L-1H411



L-1H211

DOWAエレクトロニクス株式会社

[日本 (Japan) / Oceania] 村瀬 健一 (Kenichi Murase) e-mail: murasek@dowa.co.jp

DOWAエレクトロニクス株式会社

〒101-0021 東京都千代田区外神田四丁目14番1号 秋葉原UDX 22階 / TEL : 03-6847-1253