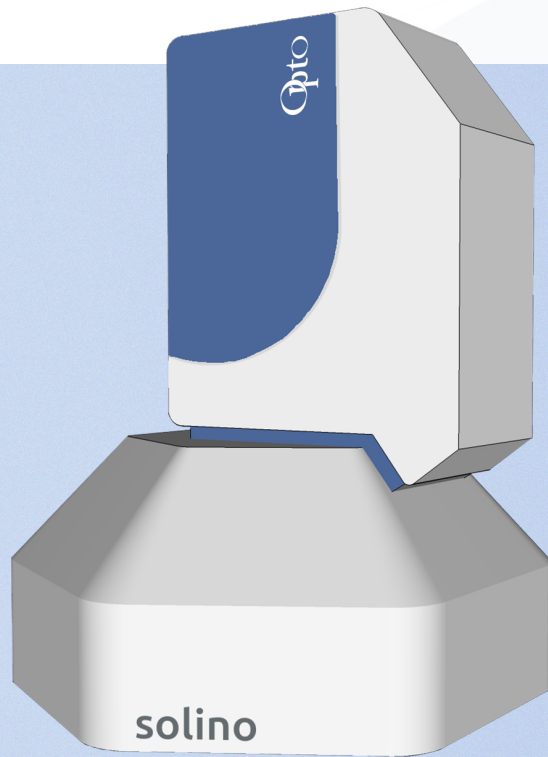




Tea IM•solino 10 x 12

solino® digitizes the surface appearance for intuitive perception



- Plug-and-Play Imaging Module
- Now AI ready sensor for industry 4.0
- Consistent processing based on BRDF comparison
- Redefines textural surface standards
- Robust design with multiple mounting options
- Detects nearly all surface characteristics and anomalies

solino digitizes the visual appearance of objects

Applications

- Predictive maintenance
- Quality inspection and assurance
- Manufacturing process automation
- Easy inspection of bubbles, staining, fingerprints, dents, cracks, etc.

Benefits

- Easy access for new vision users
- solino® finds defects beyond the limits of human perception
- Detection of roughness, reflectivity, inclination
- Eliminates reflections on metallic surfaces
- 100% less returning 100% QC and process automation possible
- Increase of Pixel resolution



Original.



solino®





Specification

FoV:	10 x 12 mm
Working distance:	15 mm
Camera:	5 MP area scan / USB
Illumination:	64 LED Dome incl. controller
Dimensions:	210 x 300 x 210 mm
Software:	solino Viewer included for Image acquisition and pre-processing
CE / RoHS / WEEE-Reg.-No. DE 68564667	

solino Image Acquisition

solino is based on images with a direct correlation of the light sources to the camera. In the solino 10x10 Imaging Module we choose a Photometric Stereo Image Acquisition with 64 LED's mounted inside a dome with known Intensity features and location.



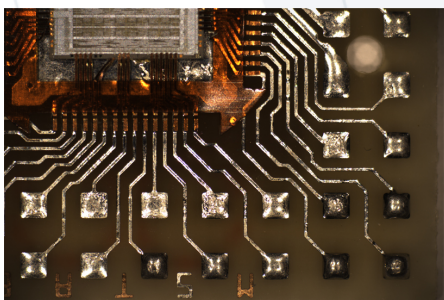
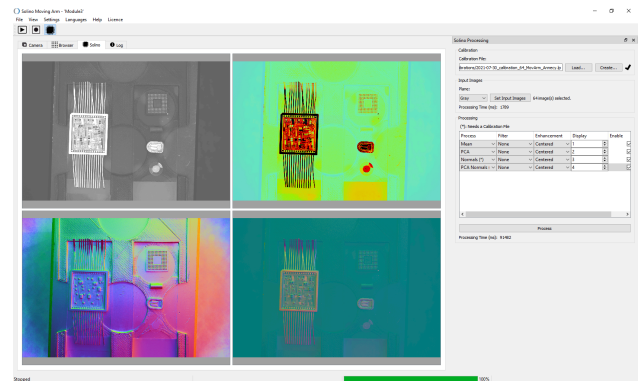
solino® image processing

solino is based on computational methods to add immediately values to evaluate the quality of your process and product. solino considers surface appearance as a combination of light and product parameters such as : Material, Shape and Hue.

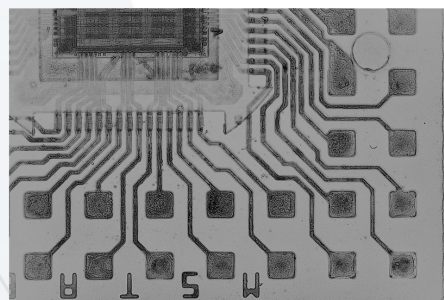
solino viewer 1.0

The Opto Imaging Module sensor “solino 10x12” for digitizing the surface appearance of objects comes with a free solinoViewer 1.0 SW package. This includes:

- Intuitive UI for positioning and focusing the object
- Live mode with up to 4 processed solino images in parallel
- Easy selection out of more than 200 processing algorithms
- Easy setting correction interfaces for running the solino Module



Original.



solino®

