




3D Industrial Camera PM805/PM806

Optimized for Industry Robot



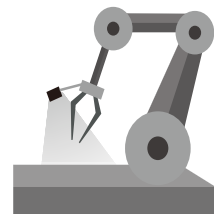
Highlights

-  Patented active stereo technology
-  Millimeter accuracy at distance of up to 4 m
-  Work with industry robot for factory automation

Application



Pick&Place

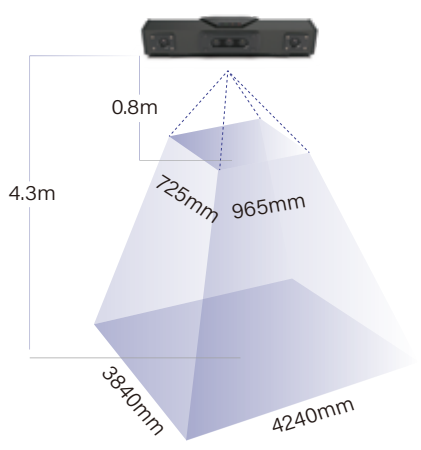


Robot Guidance

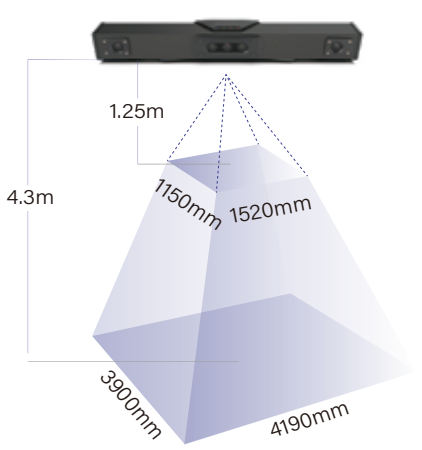
Specification

Model	PM805-E1	PM806-E1
Working Distance	0.8m-4.3m	1.25m-4.3m
FOV (H/V)	62°/ 49°	
Capture Time	845ms ~1762ms	820ms ~1672ms
Accuracy(Z)	1.69mm@1500mm; 3.14mm@2000mm	2.48mm@2000mm; 4.25mm@3000mm
Accuracy(XY)	1.88mm@1500mm; 2.94mm@2000mm	4.57mm@2000mm; 6.86mm@3000mm
Depth Resolution	1280 * 960	
RGB Resolution	2560 * 1920	
IP Rating	IP54	
Power Consumption	≤16W	
Size	388.4mm*85.5mm*89.6mm	538.4mm*85.5mm*89.6mm
Weight	1930g	2200g
Data Connector	M12 X-Code, 8-pin, female connector	
Power Supply	DC 24V ; PoE(IEEE802.3at)	
Power & Trigger Connector	M12 A-Code, 8-pin, male connector	

Size



PM805-E1



PM806-E1



Leading Provider of 3D Machine Vision

www.pcp3d.com

info@pcp3d.com



PERCIPIO.XYZ
@Youtube