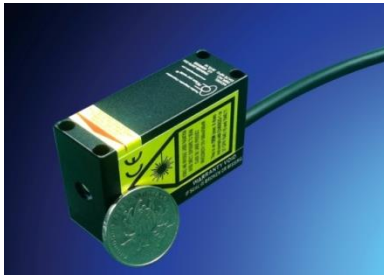
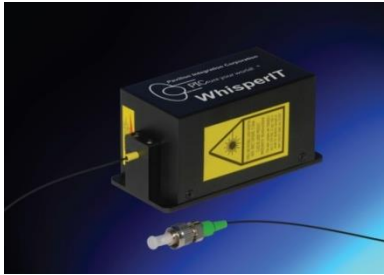


# WhisperIT® Custom Beam Shape



WhisperIT® Standard, SL, and Mini lasers are laser diode based continuous-wave solid-state lasers that offer significantly increased lifetime, and improved efficiency over DPSS, HeCd or Argon lasers. The proprietary WhisperIT® technology eliminates mode hops, delivers lasers with extremely low optical noise.

Whisper lasers have low coherence and speckle, near immunity to damage from back reflected light, and have the lowest noise available among all commercially available diode lasers.

The WhisperIT® series lasers have elliptical beams that are tailored to match specific customer requirements.

## SPECIFICATIONS

<b>Wavelength</b>	375 nm to 1064 nm
<b>Power</b>	Up to 250 mW
<b>RMS noise (20 Hz to 20 MHz)</b>	< 0.2 %
<b>Power Stability over 24 hours</b>	<2% over 15-45°C Temperature Range
<b>Beam Diameter<sup>1</sup></b>	Per Customer Requirements (Range of the beam sizes: Fast Axis 0.6-1.5mm, Slow Axis 1.1-3.0mm)
<b>Beam Divergence</b>	<1.2mrad for 0.7mm Beam Diameter
<b>M-squared (M<sup>2</sup>)</b>	< 1.2
<b>Pointing Stability</b>	<6 μrad/°C
<b>Beam Static Alignment Tolerance</b>	Position +/- 0.5mm; Angle +/- 2.5 mrad
<b>Warm-up Time</b>	< 1min (typical 10 sec)
<b>Polarization</b>	>100:1; vertical +/- 3°, (typical)
<b>Modulation Options</b>	Analog Modulation, Digital Modulation
<b>Control Options</b>	Manual, RS232, USB

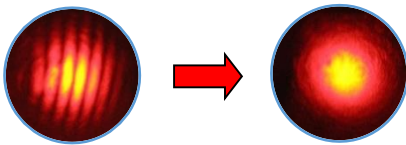
<sup>1</sup>Measured at 1/e<sup>2</sup>, elliptical and round beams available.

## Whisper Advantages

- Compact**
- Low Noise**
- Efficient**
- Extremely Stable**



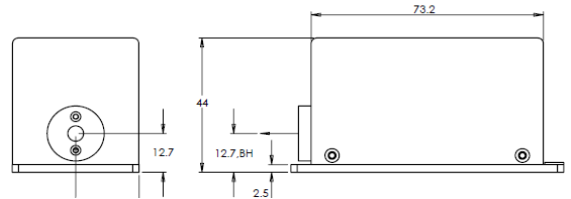
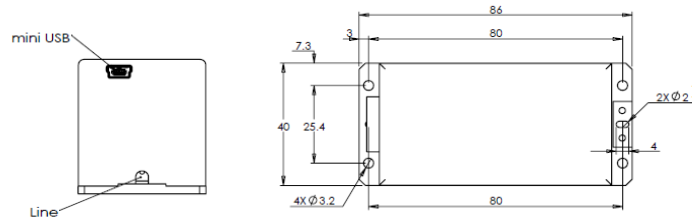
**Low Noise**



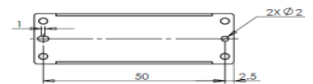
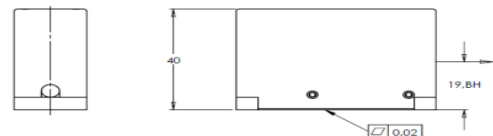
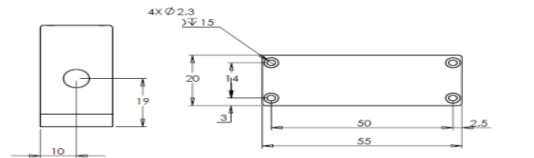
**Low Coherence**

## Applications

- Flow Cytometry**
- DNA Sequencing**
- Medical Imaging**
- Confocal Microscopy**
- Metrology**



**Standard Whisper Laser Dimensions (mm)**



**Mini Whisper Laser Dimensions (mm)**

